

# INSTRUCTIONS FOR ORDERING PARTS

All service parts should be ordered through your authorized H&S dealer. He will be able to give you faster service if you will provide him with the following:

1. Model & Serial Number - Both can be located on the front PTO Bearing Support Mount.
2. All reference to left or right apply to the machine as viewed from the rear.
3. Parts should not be ordered from illustration only. Please order by complete part number.
4. If your dealer has to order parts - give shipping instructions.

VIA truck - large pieces (please specify local truck lines)

VIA United Parcel Service (include full address)

H&S MFG. CO. INC.	
MARSHFIELD, WIS.	
MOD. NO.	<input type="text"/>
SER. NO.	<input type="text"/>
DESCR.	<input type="text"/>

PLEASE RECORD NUMBERS FOR YOUR UNIT FOR QUICK REFERENCE

## ABOUT IMPROVEMENTS

H&S IS CONTINUALLY STRIVING TO IMPROVE ITS' PRODUCTS.

We must therefore, reserve the right to make improvements or changes whenever it becomes practical to do so, without incurring any obligation to make changes or additions to the equipment previously sold.

# DECAL LOCATION MODEL 80

Your H&S Manure Spreader was manufactured with operator safety in mind. Located on the manure spreader are various decals to aid in operation, and warn of danger or caution areas. Pay close attention to all the decals on your Manure Spreader.



**DO NOT REMOVE ANY OF THESE DECALS. IF DECALS ARE LOST, DAMAGED, OR IF MANURE SPREADER IS REPAINTED, REPLACE DECALS. REMEMBER: DECALS ARE FOR YOUR PROTECTION AND SAFETY.**

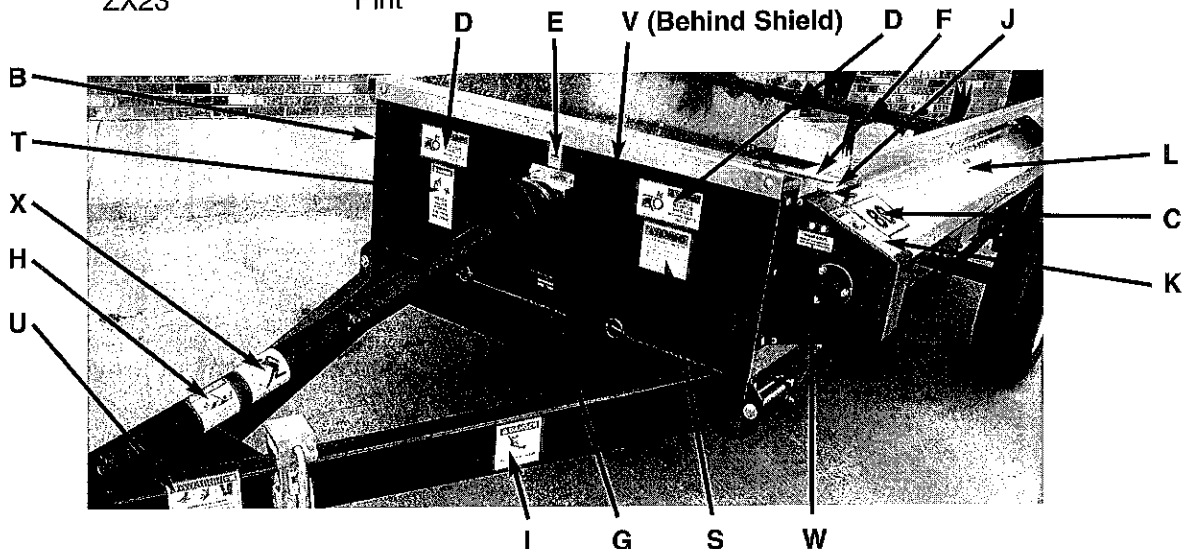
Listed below are the decals on your Manure Spreader. These decals may be ordered individually by part number or by ordering a complete set.

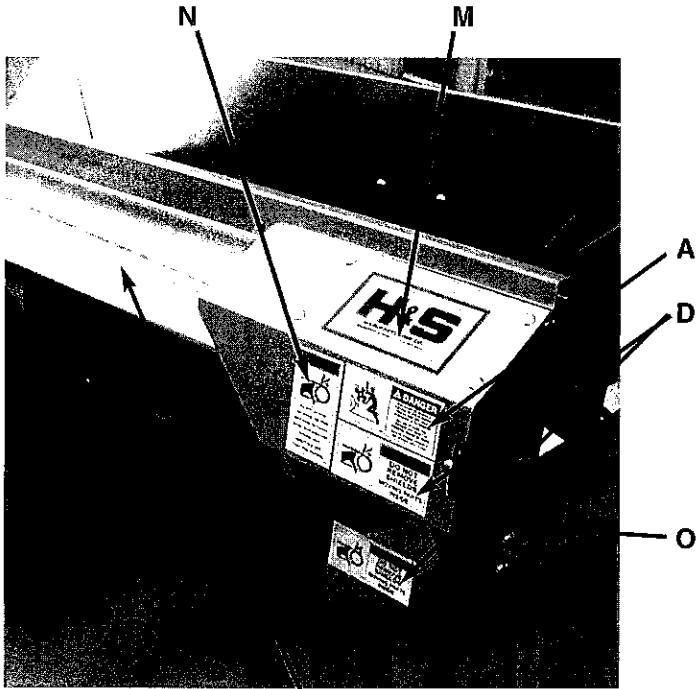
ITEM	PART NO.	DESCRIPTION
A	111593A	(2) Danger - Stay Clear of Beater
B	B12	H&S Decal (6x12)
C	H71294	(2) Model 80
D	1494B	(4) Warning - Do Not Remove Shields
E	FEMA	
F	52703C	Beater Engaged/Disengaged
G		Serial Number
H	16SV283	Danger - Rotating Driveline
I	9194A	(2) Danger - No Step
J	714-3189	Beater Disengage - Clean Out
K	1494K	Warning - Do Not Remove Shields
L	12794	Warning - Do Not Remove Shields
M	B8	H&S Decal (5x8)
N	1494J	Warning - Do Not Clean
O		Red Reflector
P	3894	Warning - Do Not Operate
Q	71494A	(2) Warning - Do Not Operate
R	1494A	(3) Warning - Do Not Operate
S	72203A	Warning - Help Avoid Injury
T	9194B	Danger - Never Allow Riders
U	82602	Warning - Crushing Hazard
V	H&S	Patent Numbers
W	112-11176	Shear Bolts
X	16SV384	Danger - 540 RPM Only
	61103-80	Complete Set of Decals

Paint - H & S Red

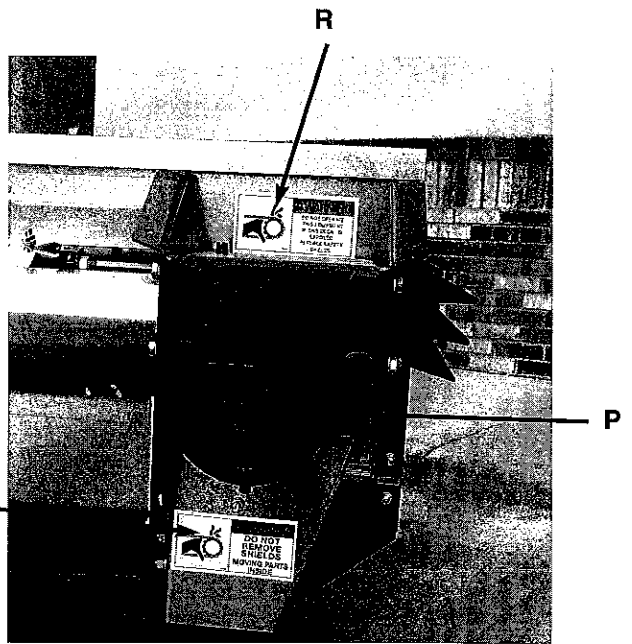
ZX21  
ZX22  
ZX23

Gallon  
Quart  
Pint

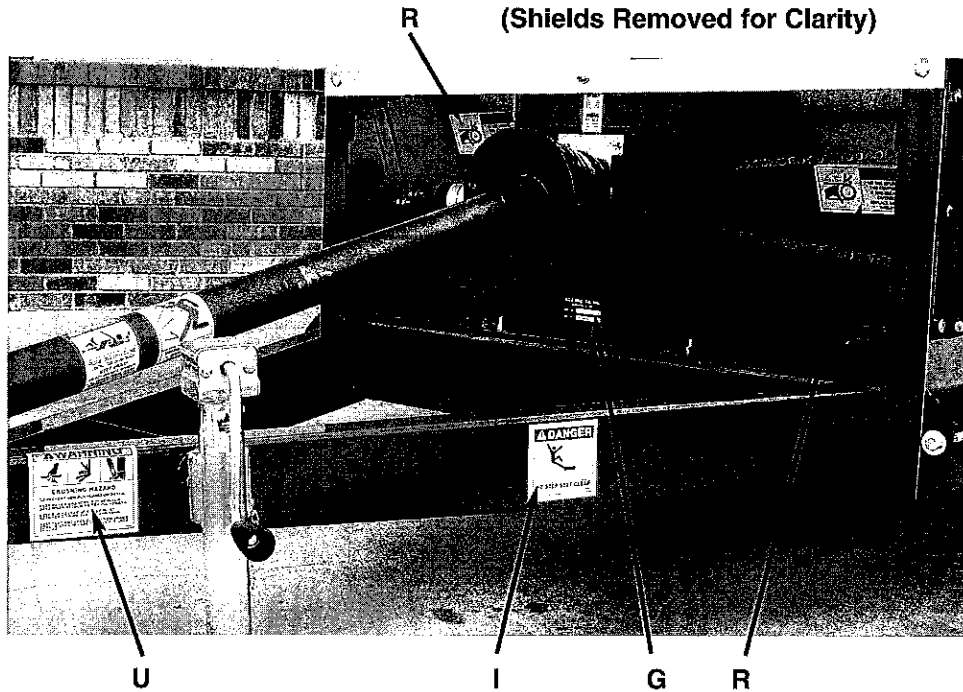




Q (Located Behind Shield)



(Shields Removed for Clarity)



## DECAL LOCATION MODEL 125

Your H&S Manure Spreader was manufactured with operator safety in mind. Located on the manure spreader are various decals to aid in operation, and warn of danger or caution areas. Pay close attention to all the decals on your Manure Spreader.



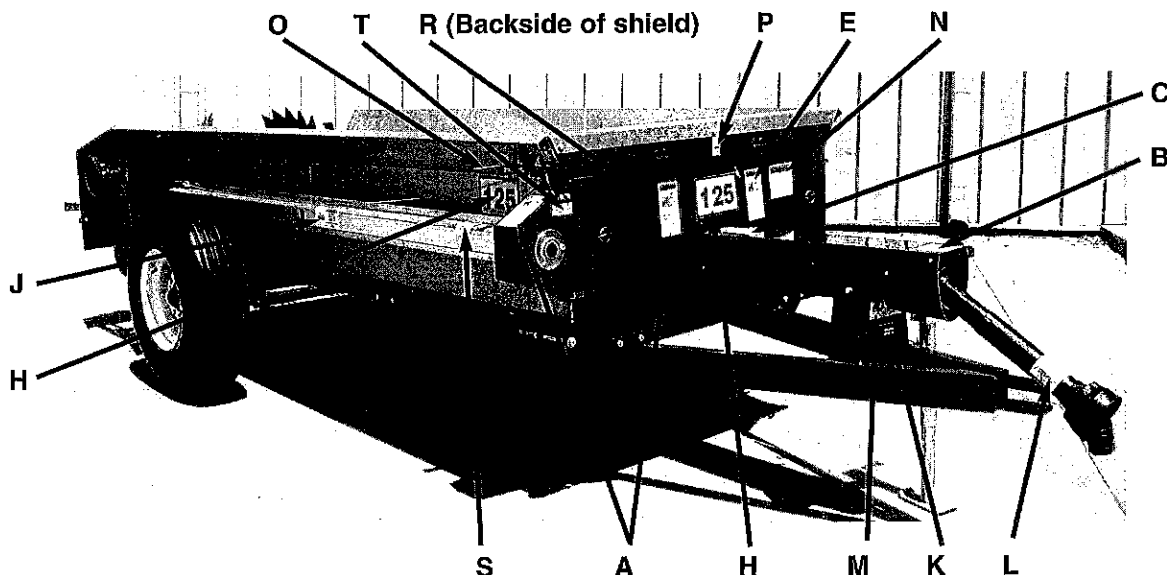
**DO NOT REMOVE ANY OF THESE DECALS. IF DECALS ARE LOST, DAMAGED, OR IF MANURE SPREADER IS REPAINTED, REPLACE DECALS. REMEMBER: DECALS ARE FOR YOUR PROTECTION AND SAFETY.**

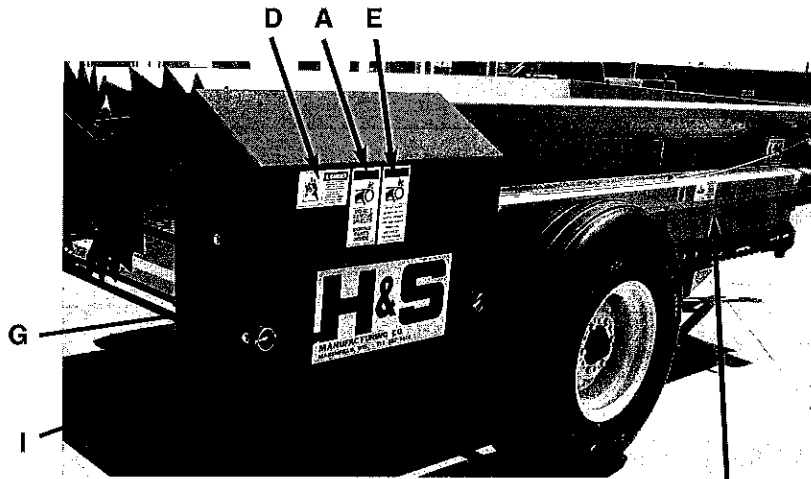
Listed below are the decals on your Manure Spreader. These decals may be ordered individually by part number or by ordering a complete set.

ITEM	PART NO.	DESCRIPTION
A	1494K	(3) Warning - Do Not Remove Shields
B	9194A	Danger - No Step
C	9194B	Danger - Never Allow Riders
D	111593A	(2) Danger - Stay Clear of Beater
E	1494J	(2) Warning - Do Not Hand Clean
F	71494A	(2) Warning - Do Not Operate
G		(2) Red Reflector
H	10186A	(3) Model 125
I	B17	(2) H&S Decal
J	12794	Warning - Do Not Remove Shields
K		Serial No.
L	Weasler	Danger - Rotating Driveline (H&S Decal 1494L)
M	1494A	(3) Warning - Do Not Operate
N	72203A	Warning - Help Avoid Injury
O	714-3189	Beater Disengage - Cleanout
P		FEMA Decal
Q	82602	Warning - Crushing Hazard
R	H&S	Patent Numbers
S	52703D	Beater Engage/Disengage
T	112-11176	Shear Bolts
	6503-125	Complete Set of Decals

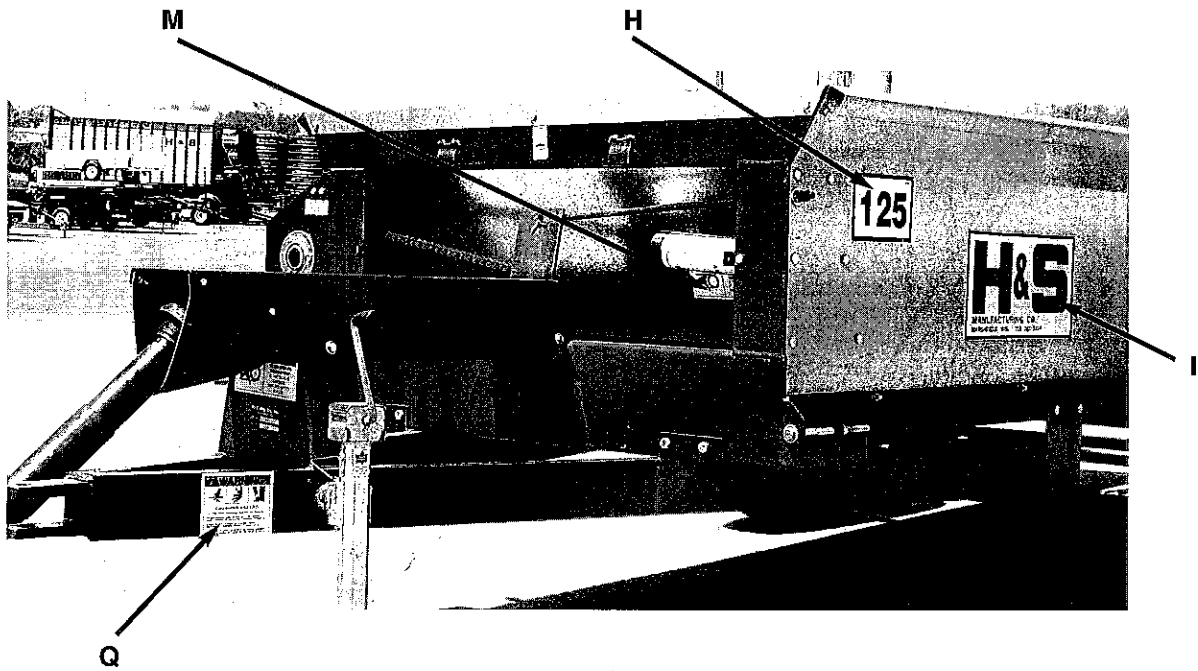
Paint - H & S Red

ZX21	Gallon
ZX22	Quart
ZX23	Pint





F (Under Shield)



Shields Removed For Clarity

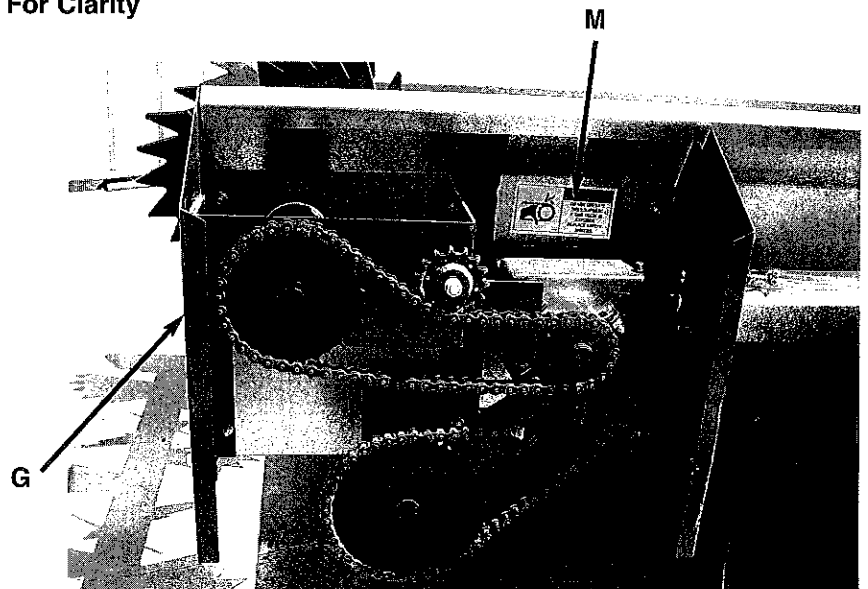
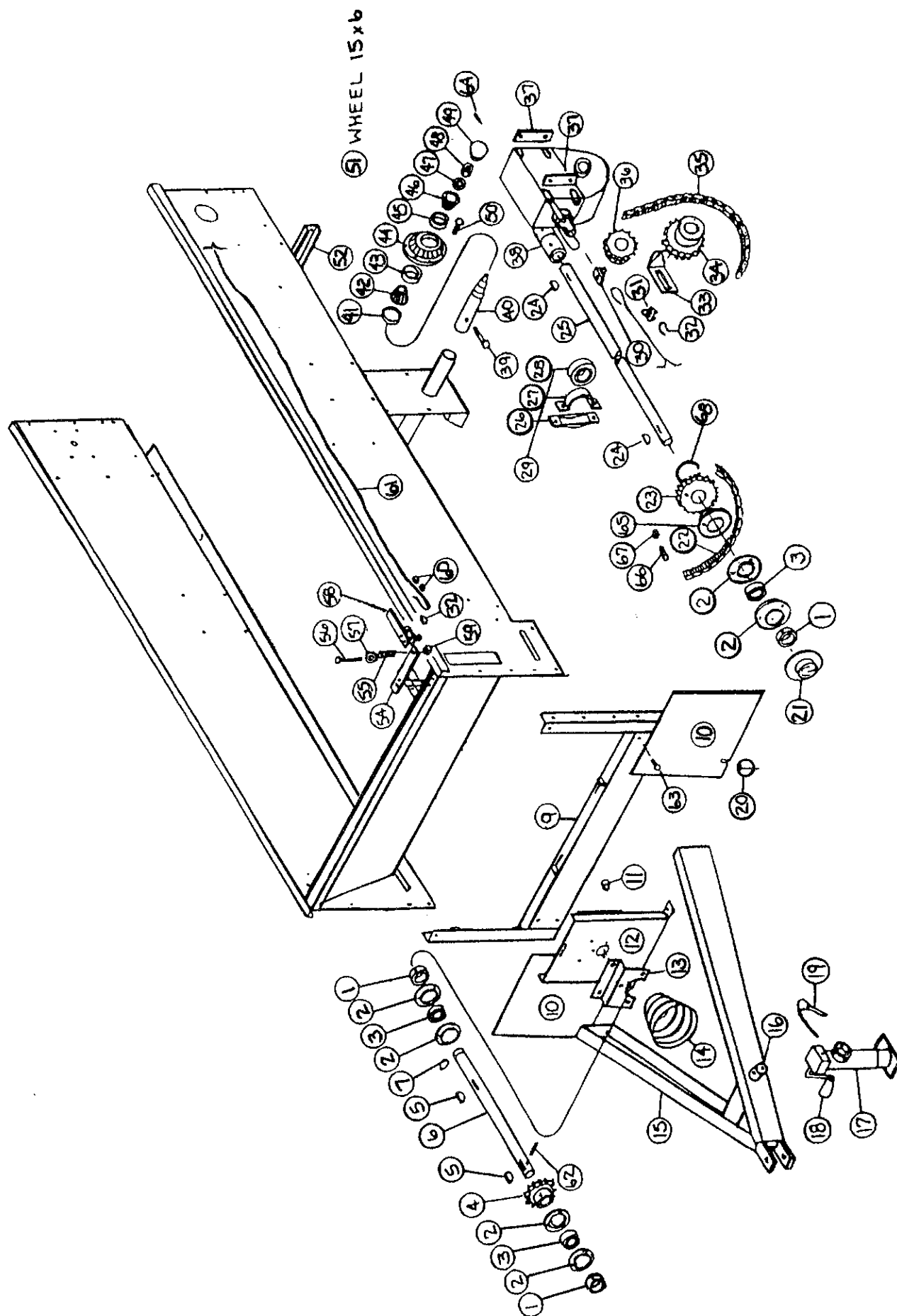


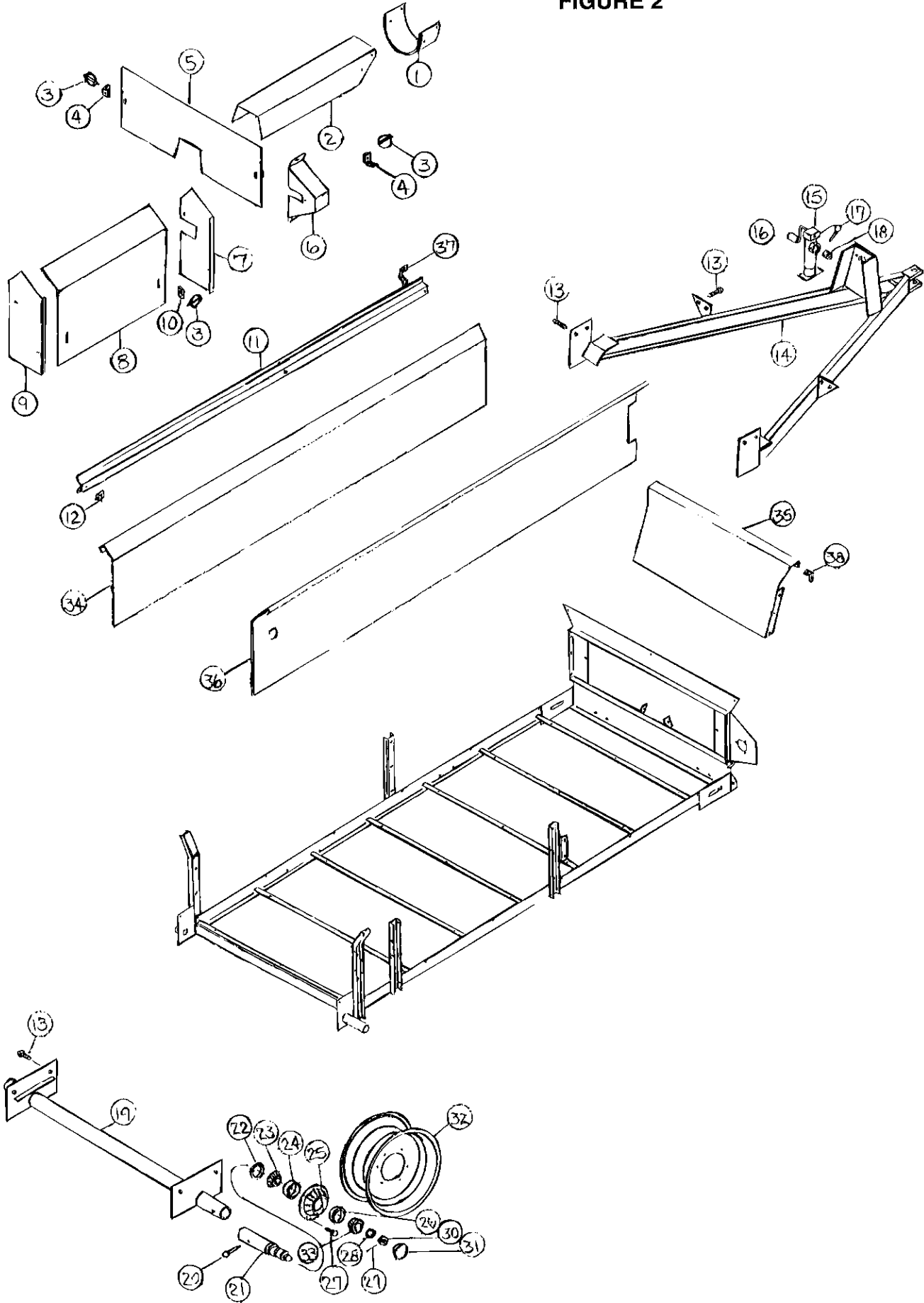
FIGURE 1



**FIGURE 1  
MODEL 80  
COMPONENT PARTS**

ITEM	PART NO.	DESCRIPTION	ITEM	PART NO.	DESCRIPTION
1.	4C9	Lock Collar	35.	80N25	#50 Roller Chain - 50 Pitches
2.	4C7	Flange	36.	80N26	17T Sprocket
3.	4C8	Bearing	37.	80N27	Gearbox Mounting Spacer
4.	4C4	Input Sprocket 13T	38.	80N28	Coupler
5.	5B10	Key 1/4" x 1"	39.	16SV91	Spindle Bolt
6.	80N7	Input Shaft	40.	12N16	Spindle
7.	3G21	Snap Ring	41.	12N17	Seal
9.	80N9	Front Frame	42.	12N18	Inner Bearing
10.	80N10	Front Poly Shields	43.	12N19	Inner Race
11.	80N11	Front Post Spacer	44.	12N20	Hub
12.	80N12	Front Post	45.	12N21	Outer Race
13.	80N13	Center Bearing Bracket	46.	12N25	Outer Bearing
14.	17G45	Implement Yoke Shield	47.	B4	Washer
15.	80N14	Pole Assembly	48.	B3	Nut
16.	12N14	Jack Mount	49.	12N23	Dust Cap
17.	12N11	Jack	50.	12N22	Hub Bolt
18.	12N12	Jack Handle	51.	RG127	Wheel 15 x 6
19.	12N13	Jack Pin & Chain	52.	80N29	Back Cross Beam
20.	F56	Linchpin	54.	80N31	Beater Shut-Off Bracket
21.	80N15	Shaft Guard	55.	5B6	Spring
22.	80N16	#50 Roller Chain - 118 Pitches	56.	12N51	Bolt 3/8" x 2-3/4" GR.5
23.	X141	40T Sprocket	57.	X67	Washer 3/8"
24.	5B10	Key 1/4" x 1"	58.	12N48	Shifter Bracket
25.	80N18	Side Shaft	59.	K93	Lock Nut 3/8"
26.	80N19	Bearing Cover	60.	ES5	Cable Clamp
27.	80N20	Bearing Holder	61.	80N33	Cable
28.	80N21	Bearing	62.	3G22	Roll Pin 5/16" x 1-3/4"
29.	80N22	Bearing Assembly	63.	R10	Bolt 1/2" x 1-1/4" GR.5
30.	80N23	Shifter Angle	64.	B31	Cotter Pin
31.	BFR220	Cable Clamp	65.	80N74	Shear Hub
32.	ES4	Thimble	66.	16SV289	Shear Bolt 5/16" x 1-1/2" GR.2
33.	80N24	Chain Tightener	67.	D81	Lock Nut 5/16"
34.	ST28	24T Sprocket	68.	23N75	Snap Ring

FIGURE 2

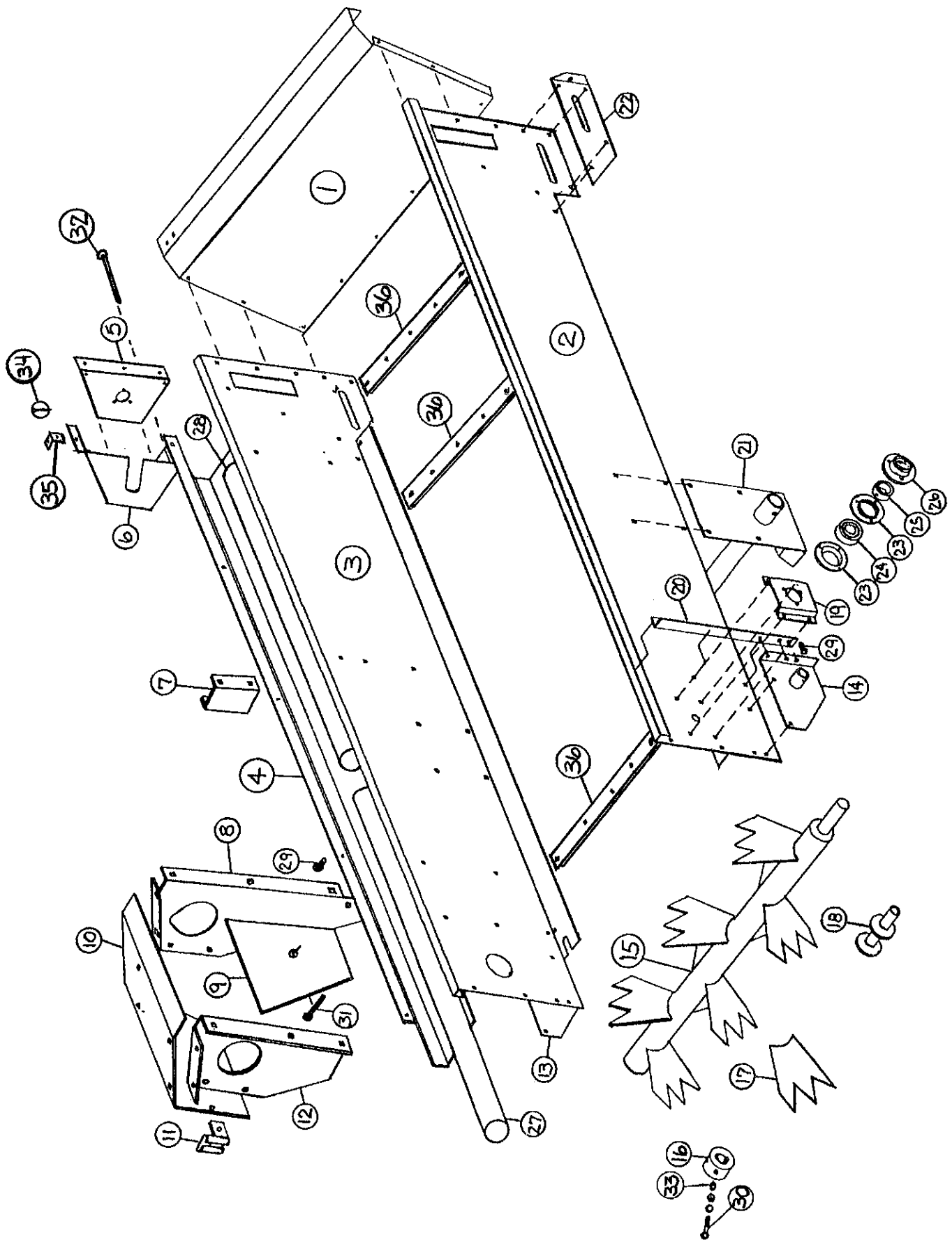




**FIGURE 2**  
**MODEL 125**  
**SHIELDS, AXLE AND POLE ASSEMBLY**

<b>ITEM</b>	<b>PART NO.</b>	<b>DESCRIPTION</b>
1.	F54	PTO Rubber Shield
2.	12N1	Shield
3.	F56	Clip Pin
4.	F92	Front Shield Bracket
5.	12N85	Front Poly Shield
6.	12N86	Front Side Shield
7.	12N4	Front Housing
8.	12N5	Cover
9.	12N6	Rear Housing
10.	F69	Shield Bracket
11.	12N87	Side Shield
12.	12N8	Side Shield Bracket
13.	R10	1/2" x 1-1/4" Bolt, GR.5
14.	12N10	Pole Assembly
15.	12N11	Jack Assembly
Not Shown	12N9	Jack Gear Replacement Kit
16.	12N12	Jack Handle
17.	12N13	Jack Pin and Chain
18.	12N14	Jack Mount
19.	12N15	Axle Tubing
20.	B10	Spindle Bolt GR.5
21.	12N16	Spindle
22.	12N17	Seal
23.	12N18	Inner Bearing
24.	12N19	Inner Race
25.	12N20	Hub
26.	12N21	Outer Race
27.	12N22	Hub Bolt
28.	B4	Washer
29.	B31	Cotter Pin
30.	B3	Nut
31.	12N23	Hub Cap
32.	12N24	Wheel
33.	12N25	Outer Bearing
34.	12N88	LH Side Panel
35.	12N89	Front Bolt In Panel
36.	12N90	RH Side Panel
37.	12N96	Front Side Shield Bracket
38.	WM135	Angle
Not Shown	12N79	Complete Hub Assembly

FIGURE 3

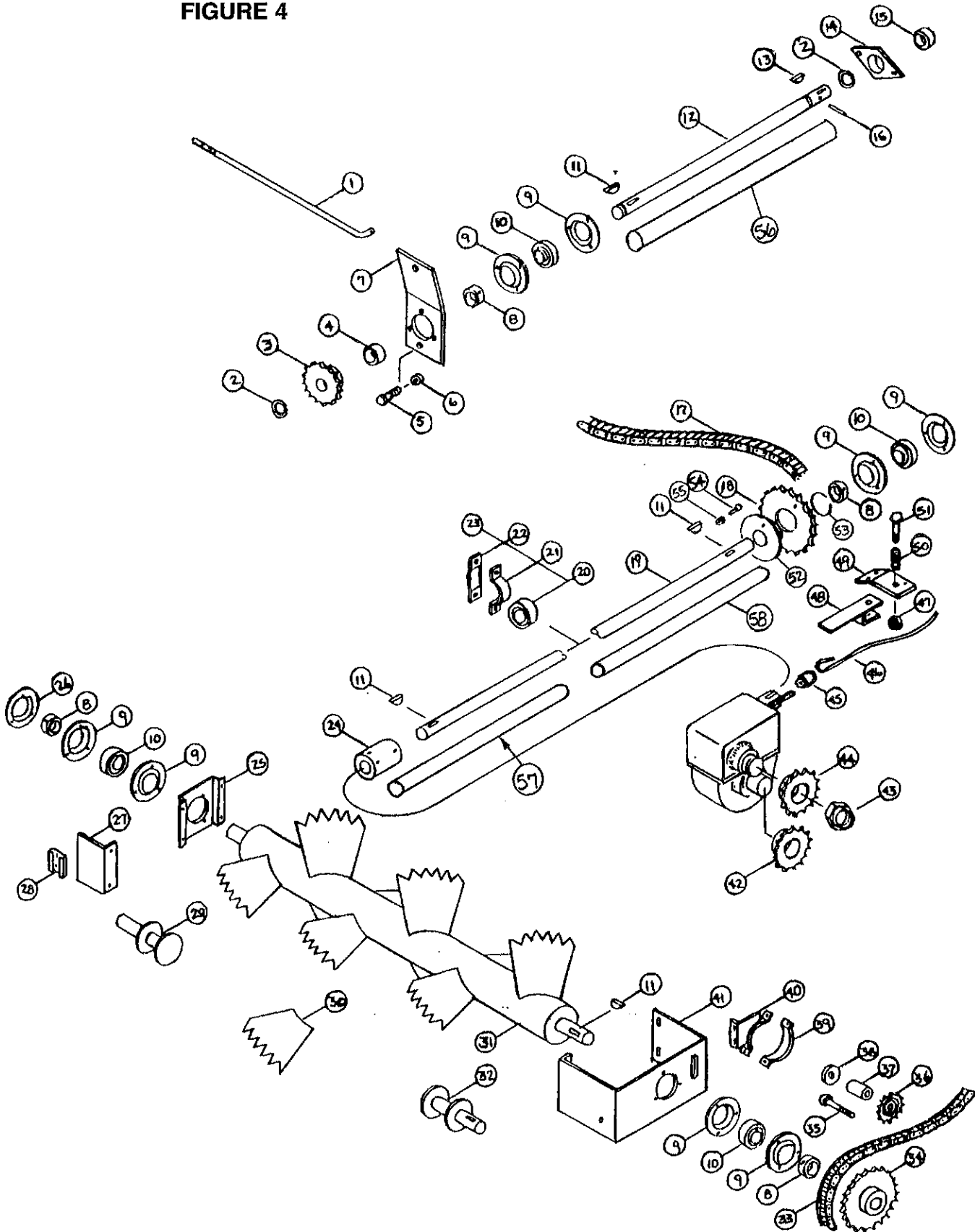


**FIGURE 3  
MODEL 80  
FRAME, BEATER & SHIELDS**

<b>ITEM</b>	<b>PART NO.</b>	<b>DESCRIPTION</b>
1.	80N34	Front Panel
2.	80N77	Right Spreader Side
3.	80N79	Left Spreader Side
4.	80N37	Side Shaft Shield
5.	80N38	Front Side Shield Cover
6.	80N80	Front Side Shield
7.	80N40	Side Bearing Mount
8.	80N41	Front Gearbox Mount
9.	80N42	Apron Drive Shield
10.	80N43	Gearbox Mounting Cover
11.	80N44	SMV Bracket
12.	80N45	Rear Gearbox Mount
13.	80N46	Apron Shaft Bracket LH
14.	80N47	Apron Shaft Bracket RH
15.	80N73	Beater
16.	80N49	Beater Insert
17.	80N50	Beater Blade
18.	80N51	Stub Shaft
19.	80N52	Beater Bearing Mount
20.	80N53	Right Side Brace
21.	80N54	Axle Assembly
22.	80N55	RH Apron Chain Tightener
*	80N56	LH Apron Chain Tightener
23.	4C7	Flange
24.	4C8	Bearing
25.	4C9	Lock Collar
26.	80N15	Bearing Cover
27.	80N32	Front PVC Guard
28.	80N69	Back PVC Guard
29.	R10	Bolt 1/2" x 1-1/4" GR.5
30.	X111	Bolt 3/8" x 1" GR.5
31.	80N70	Bolt 3/8" x 3-1/2" Carr. Bolt GR.2
32.	80N71	Bolt 3/8" x 5" GR.2
33.	80N72	Beater Bolt Spacer
34.	F56	Clip Pin
35.	F92	Angle
36.	80G5	Floor Braces

**NOTE:** \* (Means Not Shown)

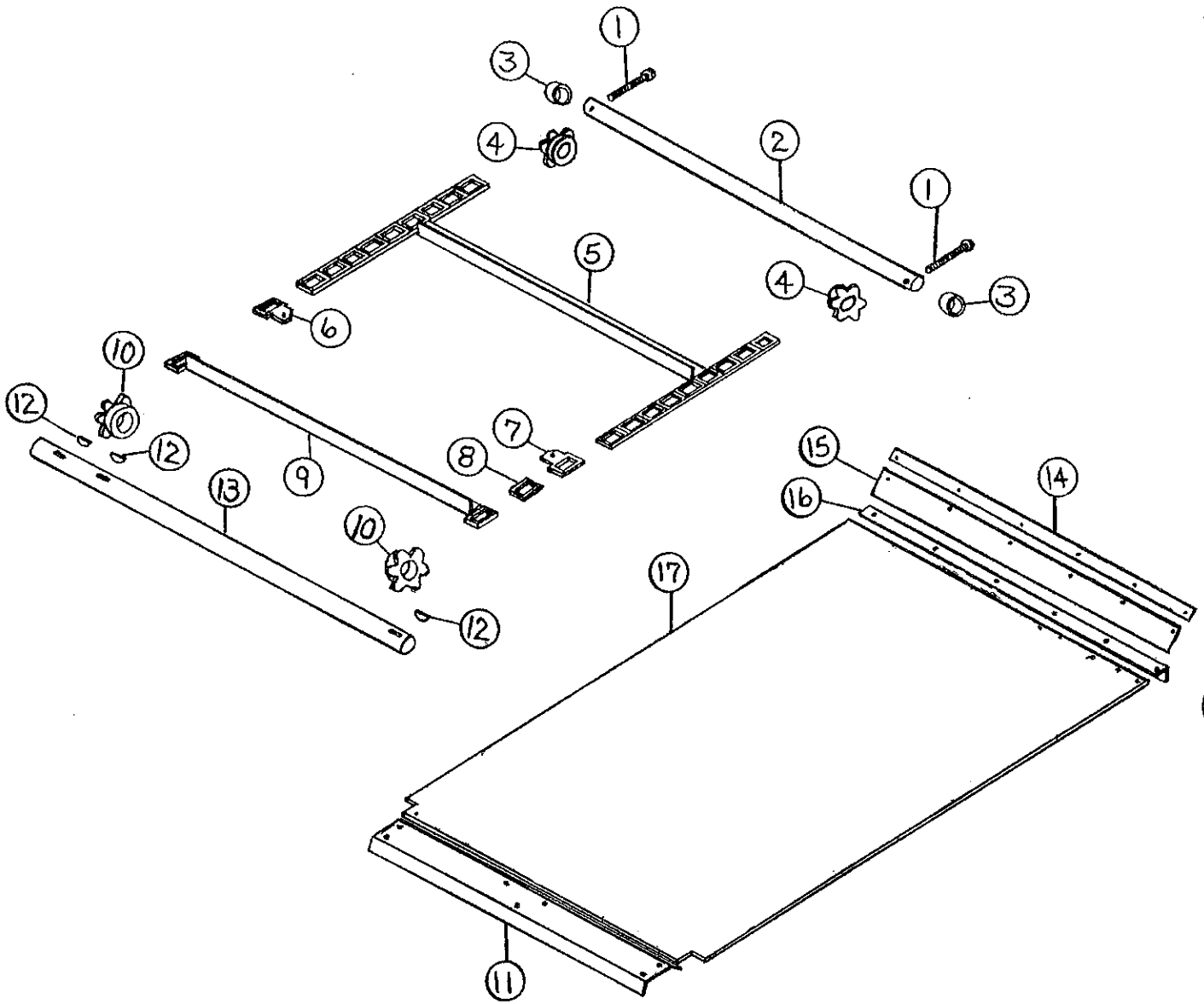
FIGURE 4



**FIGURE 4**  
**MODEL 125**  
**FRONT SHAFT, SIDE SHAFT AND BEATER**

ITEM	PART NO.	DESCRIPTION
1.	12N26	Tightener Rod
2.	F73	Snap Ring
3.	F13	20T Sprocket
4.	12N30	Spacer (2)
5.	R10	1/2" x 1-1/4" Bolt GR.5
6.	9S17	1/2" Lock Nut
7.	12N27	Front Adjustment Plate
8.	F16	Lock Collar
9.	F14	Bearing Flange
10.	F115	Bearing (Grease Type)
11.	5B9	3/8" x 1-1/4" Woodruff Key
12.	12N28	Front Shaft
13.	5B10	1/4" x 1" Woodruff Key
14.	12N29	Pillow Block Bearing
15.	12N30	Spacer
16.	F26	5/16" x 2-1/4" Roll Pin
17.	12N91	#60 Roller Chain 99 Pitches
18.	23N191	Shear Sprocket 30T
19.	12N92	Side Shaft
20.	12N33	Bearing
21.	12N34	Bearing Cover
22.	12N35	Bearing Holder
23.	12N36	Bearing Assembly
24.	D12	Connector
25.	R16	Shaft Support
26.	F95	Bearing Flange Guard
27.	12N37	SMV Sign Holder
28.	F97	SMV Holder
29.	12N38	LH Beater Stub Shaft
30.	12N39	Beater Blade
31.	12N40	Beater
32.	R34	RH Beater Stub Shaft
33.	12N41	#60 Chain 64 Pitches
34.	D26	30T Sprocket
35.	A19	1/2" x 3-1/2" Carr. Bolt GR.5
36.	12N42	Idler Sprocket
37.	12N43	Spacer
38.	12N44	Washer
39.	D100	Ring for Beater Brace
40.	12N45	Gearbox Brace
41.	12N46	Beater Rear Support
42.	D18	16T Sprocket
43.	G35	Stake Nut
44.	D23	16T Sprocket
45.	F31	Cable Loop
46.	12N47	Cable
47.	A14	3/8" Nylock Nut
48.	12N48	Shut-Off Lever
49.	12N49	Shut-Off Bracket
50.	5B6	Shut-Off Spring
51.	12N51	3/8" x 2-3/4" Bolt GR.5
52.	23N190	Shear Hub
53.	23N189	Snap Ring
54.	D31	5/16" x 1-1/2" Shear Bolt GR.5
55.	D81	5/16" Lock Nut
56.	12N82	Front Shaft Shield
57.	12N84	Back Side Shaft Shield
58.	12N83	Front Side Shaft Shield
Not Shown	D38	#60 Offset Link
Not Shown	D39	#60 Connector Link

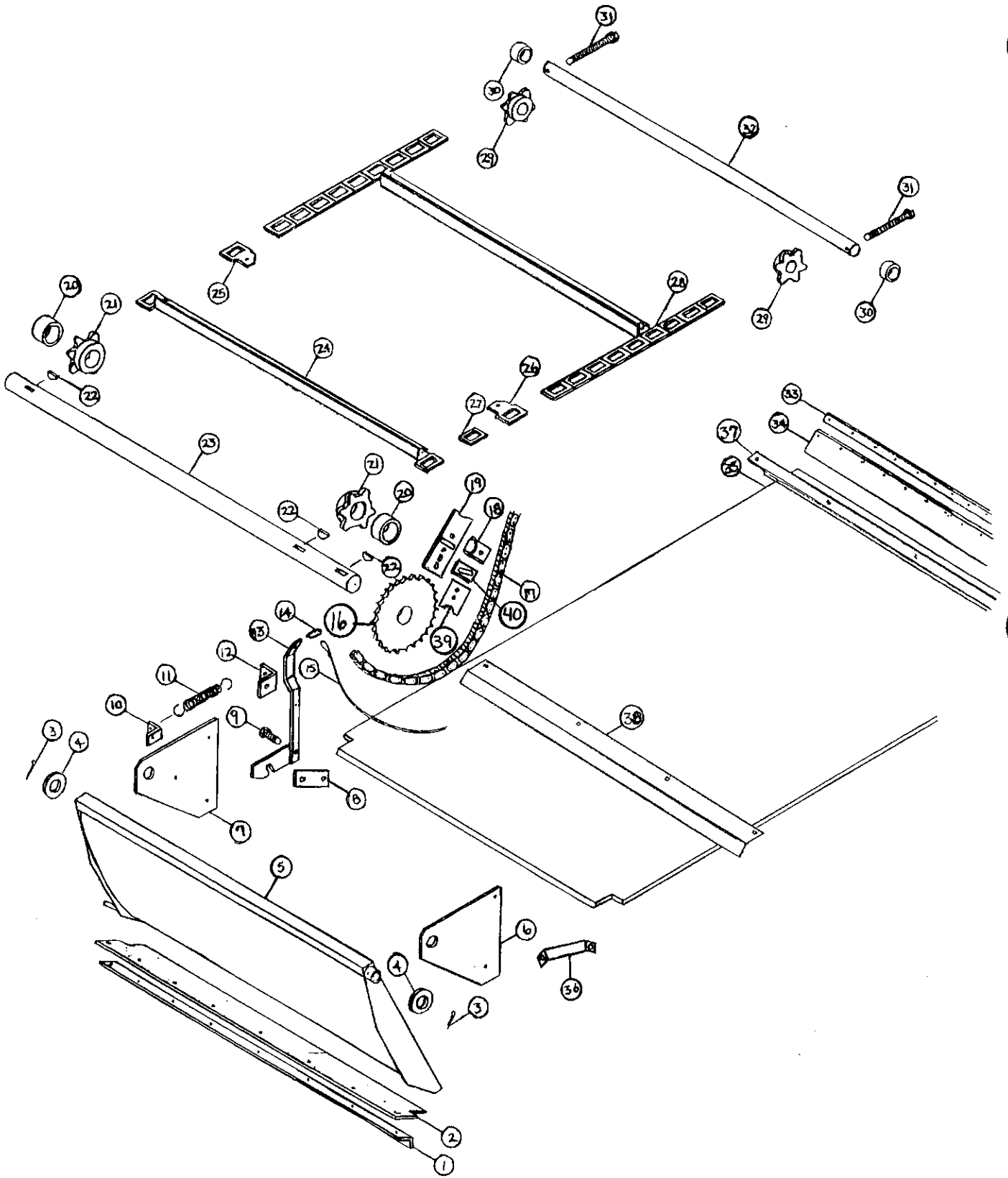
FIGURE 5



**FIGURE 5**  
**MODEL 80**  
**APRON, CHAIN, SHAFTS & FLOOR**

<b>ITEM</b>	<b>PART NO.</b>	<b>DESCRIPTION</b>
1.	A7	Idler Shaft Bolt
2.	12N67	Idler Shaft
3.	12N66	Spacer
4.	12N65	Idler Sprocket
5.	80N58	Apron Chain
6.	11S23	Att. Link LH 67H
7.	11S24	Att. Link RH 67H
8.	11S25	Connector Link 67H
9.	80N62	Slat W/Att. Link
10.	80N63	Apron Drive Sprocket 6T
11.	80N78	Rear Floor Brace
12.	G12	Key
13.	80N65	Apron Drive Shaft
14.	80N66	Front Rubber Strap
15.	12N69	Front Rubber
16.	80N67	Front Floor Brace
17.	80N81	Poly Bonded Floor

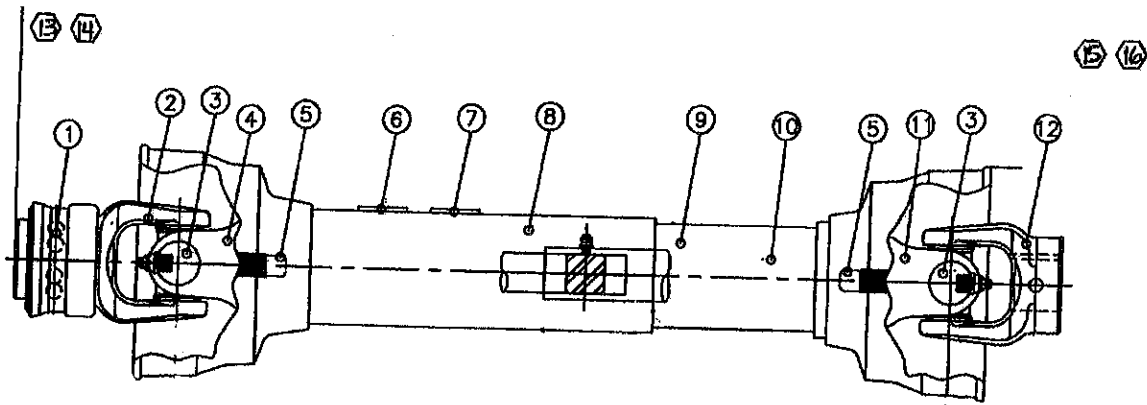
FIGURE 6





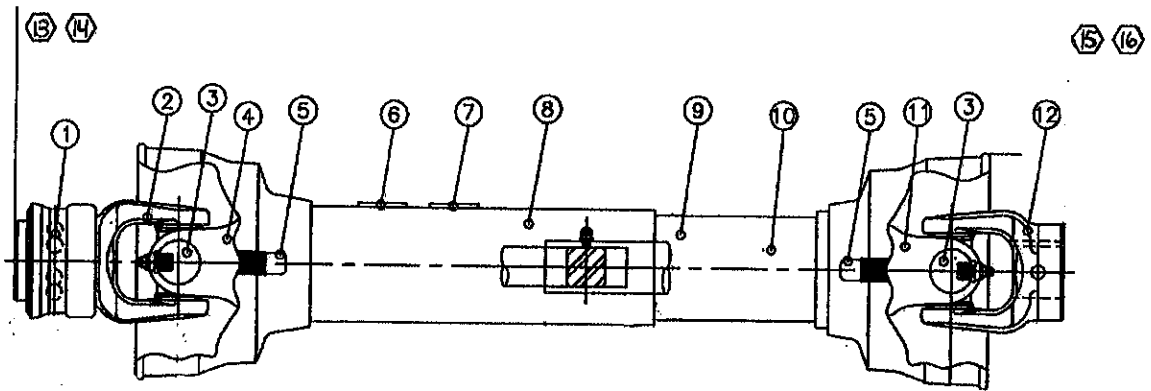
**FIGURE 6**  
**MODEL 125**  
**APRON, CHAIN, FLOOR & PAN**

<b>ITEM</b>	<b>PART NO.</b>	<b>DESCRIPTION</b>
1.	12N52	Rubber Flap Angle
2.	12N53	Rubber Flap
3.	R70	Cotter Pin
4.	R3	Pan Spacer
5.	12N54	Pan
6.	12N55	RH Pan Support
7.	12N56	LH Pan Support
8.	12N57	Trip Lever Plate
9.	R30	1/2" x 2" Bolt
10.	R26	Spring Angle
11.	R27	Spring
12.	R60	Trip Lever Stop
13.	12N58	Trip Lever
14.	R31	Clip
15.	12N59	Trip Rope
16.	12N60	40T Sprocket
17.	12N41	#60 Chain 64 Pitches
18.	D20	Chain Tightener
19.	12N103	Brace Gearbox to Drive Shaft
20.	A39	Spacer
21.	A4	Conveyor Drive Sprocket 6T
22.	5B9	3/8" x 1-1/4" Key
23.	12N62	Drive Shaft
24.	12N63	67XH Slat with Att. Link
25.	11S26	67XH Att. Link LH
26.	11S27	67XH Att. Link RH
27.	11S29	67XH Connector Links
28.	12N64	67XH Complete Apron
29.	12N65	6T Idler Sprocket
30.	12N66	Spacer
31.	A7	1/2" x 9-1/2" Bolt GR.5
32.	12N67	Idler Shaft
33.	12N97	Angle for Rubber
34.	12N69	Front Rubber
35.	12N93	Floor Poly Bonded
36.	12N50	Brace
37.	12N94	Front Floor Brace
38.	12N95	Rear Floor Brace
Not Shown	D38	#60 Offset Link
Not Shown	D39	#60 Connector Link
Not Shown	D92	Apron Slow Down Sprocket 48T
Not Shown	12N80	Apron Speed Up Sprocket 32T
39.	12N104	Short Drive Shaft Brace
40.	12N105	Wedge



**FIGURE 7  
MODEL 80  
PTO PARTS**

<b>ITEM</b>	<b>PART NO.</b>	<b>DESCRIPTION</b>
1.	S225	Spring-Lok Repair Kit
2.	S379	Spring-Loc Yoke Assm.
3.	T274	12P Cross and Bearing Kit
4.	80N88	Yoke and Shaft
5.	S206	Guard Repair Kit (Not Shown)
6.	16SV283	Safety Sign
7.	16SV384	Safety Sign 540 RPM
8.	80N89	Outer Guard
9.	80N90	Inner Guard
10.	16SV388	Safety Sign (Not Shown)
11.	80N91	Yoke and Tube
12.	80N92	Yoke
13.	80N84	Joint & Shaft Half Assm. w/Guard
14.	80N85	Joint & Shaft Half Assm.
15.	80N86	Joint & Tube Half Assm. w/Guard
16.	80N87	Joint & Tube Half Assm.
17.	80N83	Complete PTO Assembly

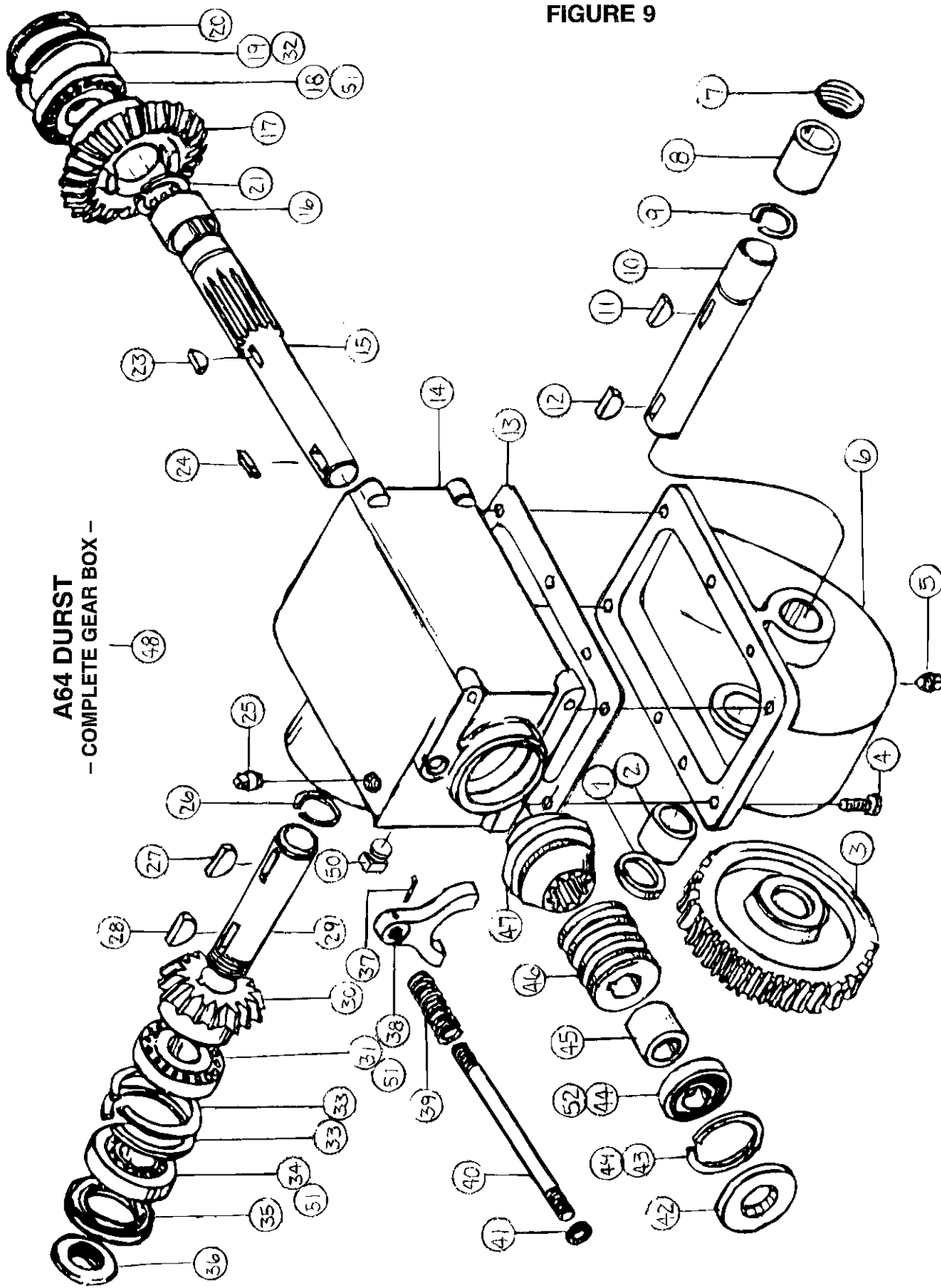


**FIGURE 8  
MODEL 125  
PTO ASSEMBLY**

<b>ITEM</b>	<b>PART NO.</b>	<b>DESCRIPTION</b>
1.	S225	Spring-Lok Repair Kit
2.	S379	Spring-Loc Yoke Assm.
3.	T274	12P Cross and Bearing Kit
4.	12N110	Yoke and Shaft
5.	S206	Guard Repair Kit (Not Shown)
6.	16SV283	Safety Sign
7.	16SV384	Safety Sign 540 RPM
8.	12N111	Outer Guard
9.	12N112	Inner Guard
10.	16SV388	Safety Sign (Not Shown)
11.	12N113	Yoke and Tube
12.	12N115	Yoke
13.	12N106	Joint & Shaft Half Assm. w/Guard
14.	12N107	Joint & Shaft Half Assm.
15.	12N108	Joint & Tube Half Assm. w/Guard
16.	12N109	Joint & Tube Half Assm.
17.	12N102	Complete PTO Assembly

FIGURE 9

A64 DURST  
- COMPLETE GEAR BOX -



**FIGURE 9**  
**MODEL 80 & 125**  
**GEAR BOX**

<b>ITEM</b>	<b>PART NO.</b>	<b>DESCRIPTION</b>
1.	G1	Seal
2.	G2	Bushing
3.	12N98	36T Gear
4.	G4	Capscrews (8)
5.	G5	Drain Plug
6.	G6	Gear Housing - Lower
7.	G7	Expansion Plug
8.	G2	Bushing
9.	G9	Snap Ring
10.	12N99	Low Speed Output Shaft
11.	G11	1/4" x 1-1/8" Key
12.	G12	5/16" x 1" Key
13.	G13	Gasket
14.	G14	Gear Housing - Top
15.	12N100	Shaft
16.	G16	Bushing
17.	G17	24T Gear
18.	G18	Bearing
19.	G55	Snap Ring
20.	G20	Cap
21.	G9	Snap Ring
23.	G22	1/4" x 7/8" Key
24.	G23A	5/16" x 1-1/4" Square Key
25.	G24	Plug Vent
26.	G25	Snap Ring
27.	G26	3/8" x 1-1/4" Key (Hardened)
28.	5B9	3/8" x 1-1/4" Key
29.	G28	Hi-Speed Output Shaft
30.	G29	16T Gear
31.	G53	Bearing
32.	G69	Shim (When Needed)
33.	G55	Snap Ring (2)
34.	G33	Bearing
35.	G34	Seal
36.	G35	Stake Nut
37.	G95	1/8" x 1-1/2" Cotter Key
38.	G37	Yoke
39.	G38	Spring
40.	G39	Clutch Rod
41.	G40	Seal
42.	G41	Seal
43.	3G19	Snap Ring
44.	L3G24	Bearing
45.	G44	Spacer Ring
46.	12N101	Worm
47.	G46	Clutch 18T Spline
48.	D7A	Gearbox Complete
49.	G92	Shim (When Needed)
50.	G87	Plug 1/8-27 NPT
51.	G54	Race
52.	3G18	Race

FIGURE 10

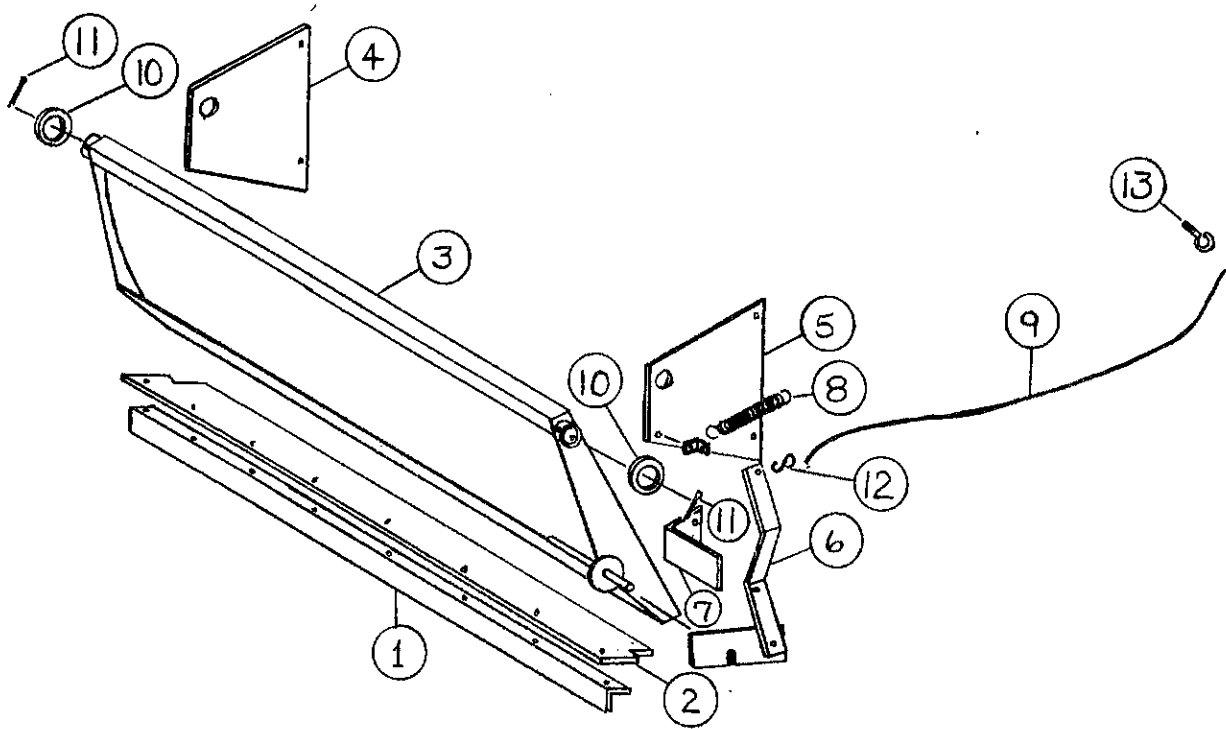


FIGURE 10  
MODEL 80  
OPTIONAL PAN  
80 BUSHEL SPREADER

ITEM	PART NO.	DESCRIPTION
1.	12N52	Pan Angle
2.	12N53	Pan Rubber
3.	80N1	Pan
4.	80N2	LH Pan Plate
5.	80N3	RH Pan Plate
6.	5N67	Pan Handle
7.	80N82	Pan Handle Stop
8.	R27	Pan Handle Spring
9.	80N6	Trip Rope
10.	R3	Pan Spacer
11.	R70	Cotter Pin
12.	R31	"S" Hook
13.	23N213	"I" Bolt

- SERVICE NOTES -

Lined area for service notes

## H&S MODEL 80 MANURE SPREADER

Your new H&S spreader has been manufactured of the finest quality materials and components. The performance you get from your machine is largely dependent upon how well you read and understand this manual and apply this knowledge. There is a right and a wrong way to do everything. Please do not assume that you know how to operate and maintain your spreader before reading this manual carefully. Keep this manual available for ready reference.

### SPECIFICATIONS

Top Flare Width . . . . .	51"
Inside Width . . . . .	48"
Inside Length . . . . .	96"
Inside Depth . . . . .	20"
Overall Width W/6.70 x 15 Tires . . . . .	76"
Overall Length . . . . .	13'-8"
Overall Length with Rear Pan . . . . .	13'-11-1/2"
Overall Height W/6.70 x 15 Tires . . . . .	34-1/2"
Wheel Tread . . . . .	67-1/2"
Diameter of Beater . . . . .	18-1/2"
Drive Worm - Timken . . . . .	Single Speed
Weight W/6.70 x 15 Tires . . . . .	1190 Lbs.
PTO Speed . . . . .	540 RPM
Capacity - Cu. Ft. Struck . . . . .	53
Old Rating . . . . .	80 Bu.
Rear Pan . . . . .	Optional Equipment
Swing Away Jack . . . . .	Standard Equipment



---

## H&S MODEL 125 MANURE SPREADER

Your new H&S spreader has been manufactured of the finest quality materials and components. The performance you get from your machine is largely dependent upon how well you read and understand this manual and apply this knowledge. There is a right and a wrong way to do everything. Please do not assume that you know how to operate and maintain your spreader before reading this manual carefully. Keep this manual available for ready reference.

### SPECIFICATIONS

Top Flare Width .....	54"
Inside Width .....	48"
Inside Length .....	10'-6"
Inside Depth .....	22"
Overall Width W/10:00 x 15 Tires .....	80"
Overall Length .....	15'-3"
Overall Length with Rear Pan .....	15'-6"
Overall Height W/10:00 x 15 Tires .....	43"
Wheel Tread .....	68"
Diameter of Beater .....	22"
Drive Worm - Timken .....	Single Speed
Weight W/10:00 x 15 Tires .....	1430 Lbs.
PTO Speed .....	540 RPM
Capacity - Cu. Ft. Struck .....	75
Old Rating .....	125 Bu.
Rear Pan .....	Optional Equipment
Swing Away Jack .....	Standard Equipment

#### NOTE

Determine right or left side of spreader by viewing it from the rear. If instructions or parts lists call for hardened bolts, they are identified with three lines or marks on the head.

---

## H&S MANUFACTURING CO. INC.

2608 S. Hume Ave.  
P.O. Box 768 - Telephone (715) 387-3414  
FAX (715) 384-5463  
MARSHFIELD, WI 54449



H&S WAREHOUSE Rt. #5 and 76  
P.O. Box 1260 - Telephone (716) 736-7595  
FAX (716) 736-7596  
RIPLEY, NY 14775

---

# **H&S MFG. CO.**

products approved

for the

## **FEMA**

# **SEAL OF QUALITY**

